

Cassette Inverter

YTKE 12 to 18 BZE / YKKE 18 to 55 BZE(O)

A complete range from 3.5 kW to 16.1 kW



Features

- High SEER & SCOP, Class A++ mainly
- Inverter DC compressor and fan motor
- Special low noise fan design
- Washable filter
- Fresh air intake
- Built-in drain pump
- Automatic restart
- Automatic air sweep
- Low Ambient Kit
- Different swing angle design for cooling and heating
- Service valve protection cover
- Rustproof casing
- Self diagnosis
- **Blue fin protection (indoor and outdoor units)**

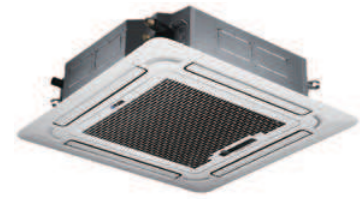
Remote controller

- Wireless
- Follow me function
- 5 operation modes (Cool/Heat/Auto/Dry/Fan)
- Sleep mode
- Room temperature setting
- Fan speed selection
- Timer setting function
- Air flow direction setting
- LCD display
- Turbo mode



Cassette Inverter

YTKE 12 to 18 BZE / YKKE 18 to 55 BZE(O)



Technical features

Set reference		YTKE_BZEEBMORX		YKKE_BZE(O)							
Indoor unit	Sizes	YTKE 12	YTKE 18	YKKE 18	YKKE 24	YKKE 30	YKKE 36	YKKE 42	YKKE 48	YKKE 55	
Outdoor unit	Sizes	YUKE 12	YUKE 18	YUKE 18	YUKE 24	YUKE 30	YUKE 36	YUKE 42	YUKE 48	YUKE 55	
Cooling capacity	kW	3.5 (0.6~4.4)	5.3 (0.8~6.2)	5.3 (0.8~6.2)	7.0 (1.2~8.2)	8.8 (2.1~10.6)	10.6 (2.9~12.0)	12.3 (3.2~13.2)	13.8 (4.0~16.1)	16.1 (5.0~18.5)	
Heating capacity	kW	4.1 (1.0~5.1)	5.6 (0.9~7.0)	5.7 (0.9~7.0)	7.0 (1.2~8.7)	9.1 (2.1~10.5)	11.1 (2.6~13.2)	13.5 (2.9~14.7)	15.5 (4.2~17.6)	18.2 (5.3~20.5)	
Compressor	Type	Rotary									
Refrigerant		R410A									
Power supply	V/Ph/Hz	230 / 1 / 50					230 / 1 / 50 or 400 / 3 / 50			400 / 3 / 50	
Power input	cooling	kW	0.96	1.63	1.68	2.17	2.76	4.06	4.09	5.15	6.39
	heating	kW	0.99	1.50	1.46	1.90	2.38	3.08	3.53	4.55	5.73
SEER			6.1	6.3	6.3	6.1	6.1	6.1	5.6	5.6	5.6
SCOP			4.0	4.0	4.0	4.0	4.0	4.0	4.0	4.0	4.0
Energy Class	cooling		A++	A++	A++	A++	A++	A++	A+	A+	A+
	heating		A+	A+	A+	A+	A+	A+	A+	A+	A+
Indoor airflow (H/M/L)	m³/h	650/530/450	660/550/490	1000/800/700	1450/1250/1100	1700/1460/1300	1900/1750/1460	1850/1600/1400	1850/1600/1400	1900/1650/1450	
Sound pressure at 1 m	Indoor (H/M/L)	dB(A)	42 / 38 / 34	46 / 42 / 38	46 / 41 / 37	46 / 42 / 39	53 / 48 / 44	53 / 50 / 47	54 / 51 / 48	53 / 49 / 45	52 / 49 / 46
	Outdoor	dB(A)	57	56.5	56.5	60.5	59.5	61	62.5	65	62.5
Dimensions	Indoor	H (mm)	260	260	205	257	257	257	287	287	287
		W (mm)	570	570	840	840	840	840	840	840	840
		D (mm)	570	570	840	840	840	840	840	840	840
	Outdoor	H (mm)	554	554	554	702	810	810	810	1 333	1 333
		W (mm)	800	800	800	845	946	946	946	952	952
		D (mm)	333	333	333	363	410	410	410	410	410
Panel H / W / D	mm	50 / 647 / 647	50 / 647 / 647	55 / 950 / 950	55 / 950 / 950	55 / 950 / 950	55 / 950 / 950	55 / 950 / 950	55 / 950 / 950	55 / 950 / 950	
Net weight	Indoor unit	kg	18.5	19	26.3	29	31.5	30.6	31.1	32	36
	Outdoor unit	kg	34.5	35.5	35.5	49	62.9	67.2	70.5	95.1	112.8
Piping	Type of connection		Flare								
	Diameter	Gas	3/8"	1/2"	1/2"	5/8"	5/8"	5/8"	5/8"	5/8"	5/8"
Liquid		1/4"	1/4"	1/4"	3/8"	3/8"	3/8"	3/8"	3/8"	3/8"	
Pipe run	Length	m	25	30	30	50	50	65	65	65	65
	Height	m	10	20	20	25	25	30	30	30	30
Operating limits - cooling mode	min/max	-15°C / +50°C									
Operating limits - heating mode	min/max	-15°C / +24°C									

Nominal cooling capacity based on : - Indoor Air Temp. 27°C DB / 19°C WB - Outdoor Air Temp. 35°C DB
 Nominal heating capacity based on : - Indoor Air Temp. 21°C DB - Outdoor Air Temp. 7°C DB/6°C WB
 Piping length : 5 m with initial charge
 Size 36, 42 and 48: Values for single phase models.

Accessories

Sizes	12	18	18	24	30	36	42	48	55
Wired control									Optional
Central control									Optional



Manufacturer reserves the rights to change specifications without prior notice.